

New CPT Code for On-line Consultations

The American Medical Association (AMA) has released a temporary Current Procedural Terminology, or CPT code, 0074T, for the types of on-line consultations that take place using the Internet. One purpose of this code is so doctors will be compensated for providing care “on-line”.

The AMA officially describes the appropriate use of the new code as follows: “An on-line medical evaluation is a type of Evaluation and Management service provided by a physician or qualified health care professional, to a patient using Internet resources, in response to the patient’s on-line inquiry. Reportable services involve the physician’s personal, timely response to the patient’s inquiry and must involve permanent storage (electronic or hard copy) or the encounter. This service should not be reported for patient contacts (e.g. telephone calls) considered to be pre-service or post-service work for other E&M or non-E&M services. A reportable service would encompass the sum of communication (e.g., related telephone calls, prescription provision, laboratory orders) pertaining to the on-line patient encounter or problem(s).”

Currently, NuMedics provides a specialized webhosting program called NuWeb. With NuWeb, care providers can review downloaded blood glucose data and nutrition/exercise information, as well as provide regimen changes and recommendations. The new CPT code could be used for these types of online consultations. NuWeb allows you to expand your services to patients using the Internet by providing electronic encounters for your existing patients. In addition, NuWeb enhances office efficiency by empowering your patients to ask questions and receive supplementary advice before and after their regular visits.

The code will become official in July, however, it is being released now to give providers and payers time to program it into their information systems. CliniPro will provide this CPT code in a release to be available in the summer of 2004.

In the meantime, if you have questions or would like to learn more about NuWeb, don’t hesitate to call us. We have a wealth of information on how NuWeb can become a valuable tool for your site.

Additional Reports available in next release

NuMedics has made the following additions/modifications to our current report options. Please use this article as a guide to these changes that will be available in CliniPro V. 3.6.24.

Click on the printer icon to activate “Select Report” screen.



New Reports for CliniPro:

Patient Medication List: “General”
Category: This report lists the current medications for a patient, as well as that patient’s allergies.

Patient Medication Record: “General”
Category: Gives the medication history of a patient over a period of time that you select. You can also select to include exams.

Patient Diagnosis by Date: “General”
Category: This report allows you to select a date, and then it will provide a list of patients diagnosed with diabetes after that date.



New Reports... Continued on page 2



..... **New Reports** continued from page 1...

Patient List by Referral Authorization Expiration: “General” Category: Lists patients who will have their referral authorization expire within the selected Date Range

Report Enhancements/Modifications in CliniPro:

Blank Patient Information Form: “Profile” Category:

You may currently use this form to gather general information from your patient, such as Social Security number, address, phone numbers, etc.; demographics information, such as occupation, race, etc.; emergency contacts and insurance information. Now you will have the option to print the form blank or populate the form with information entered in the “patient profile” part of CliniPro.

The HbA1c Compare report and the Diabetes Demographics reports (both under the “General” category) are now customizable by age range.

New Reports for NuPointment

Patient Count by Appointment Type report: Lists patients by the types of appointments they attended over a selected period of time. You will have the choice of selecting a summary or detailed view of this report.

Unscheduled Patients Report: Lists patients without appointments within a date range you select.

New Reports for NuEducation

Education - Open Cycle Report: Lists patients with open cycles. You can sort this list by open classes, tracks, or education groups.

Education Class Attendance Statistics Report: Lists the number of patients that have completed individual or group classes, how many have attended classes within or completed a track, and the number of hours each patient has spent in classes, all in a monthly breakdown.

Patient List by Incomplete Class: Lists patients that have not attended the selected classes between two dates you select. Patients are listed in alphabetical order and grouped by the classes they have not completed. The Patients’ names and MRIDs are listed as well.

“New Reports for NuEducation” is continued on page 3.....

From the President

Dear CliniPro Users,

I am excited about our new clients, and now that most of you have been updated to CliniPro V 3.6.23, you have had the opportunity to explore the new features available in the update. Our next update is not far behind, so expect a call from NuMedics soon to schedule another upgrade at your facility.

We would like to welcome three additional employees: Mary Negravel, Lisa Madison Renner, and Cyndi Lewis. They will continue in our tradition of providing the best possible customer support. We have a dedicated staff here, and we are constantly looking for ways to update and improve CliniPro. Should you have any specific needs, please be sure to let us know.

Happy computing and until next time,

Kazi Ahmed, President,
NuMedics, Inc.

Report in NuEducation Simplifies ADA Requirements

New Reports for NuEducation Continued...

American Diabetes Association (ADA) Data Period Education Participation Report: This report will help you meet requirements for ADA recognition.

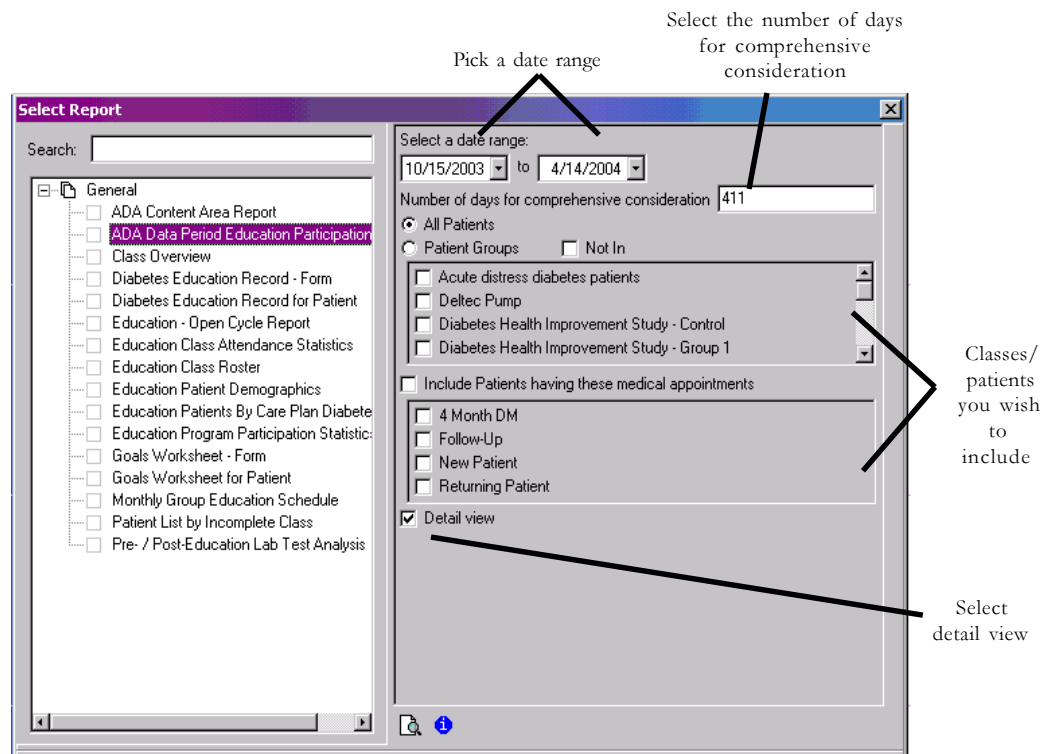
The ADA now requires that you provide a list with the number of patients receiving Diabetes Self Management Education (DSME) services over a given period of time. To generate the report in NuEducation that will give you this information, you will first select a date range (data period). The data period determines whether a patient will be included in the report. Then you will select the “number of days for comprehensive consideration”. This determines which of three categories a patient will fall into: Initial Education, Comprehensive Education, or Follow-up Education.

If a patient received his/her first diabetes education instruction during the data period, the patient will be listed under the “Initial Education” category. If a patient received additional instruction within the days you have selected for comprehensive consideration, then he/she will only appear under the “Comprehensive Education” category. If a patient falls into the “Follow-up” Category, that means he/she received initial or comprehensive education prior to the start of the data period and was seen only for additional/follow-up education during the data period.

The detail view of this report shows the patients’ names/MRIDs, their categories (Initial, Comprehensive, and Follow-up Education), names/dates of classes attended, and number of hours spent in each class.

At the end of the report, you will have the total number of patients included in the report, as well as the average number of hours each patient spent receiving DSME services during the data period.

Also note: Classes to be considered for this report should be set up as part of an ADA track in NuEducation.



Time to Upgrade your Windows™ Operating System for CliniPro® in 2004

Since NuMedics is moving into the future at a rapid pace and modifying CliniPro to meet current and upcoming needs of health care providers and educators, we are finding it impractical to support Microsoft® Windows™ 95/98 any more.

As NuMedics receives requests to further update the program and make it more adaptable to patients and providers, we make record of these suggestions and try to incorporate them into the software. To do this, we rely more heavily on recent Windows operating systems. If you have no choice but to remain using one of the older versions of Windows, CliniPro will continue to work for you, but you will not benefit from all of the updates. However, to avoid complications and to access all of the newest features in CliniPro, please note that NuMedics recommends updating to a Windows 2000/XP operating system.

If updating to a more recent version of Windows is not an option for you right now, please do not worry! The CliniPro customer support team will continue to help you with questions/problems no matter what operating system you use.

